



How might climate change affect Buriton?

- Storms and floods
- Droughts
- Heat and fire
- Cold
- Biodiversity
- Diseases
- Population movement



How to respond?

Mitigation – acting now to reduce GHG emissions

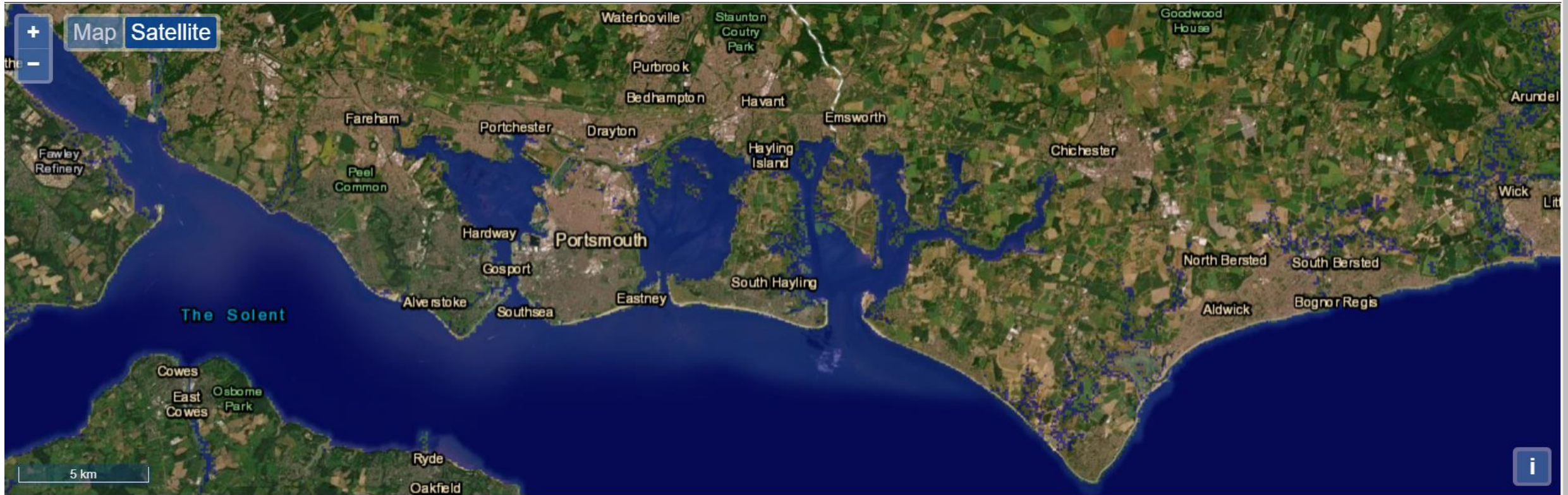
Adaptation – battening down the hatches for what's coming

=> the more mitigation, the less we will need to adapt

Sea level rise:

We get you. We got you. 

[Europe](#) [N. America](#) [S. America](#) [Africa](#) [SE. Asia](#) [China & Japan](#) [Australia](#)



Link to this page:

<http://flood.firetree.net/?ll=50.8044,-0.9609&zoom=11&m=0&type=hybrid>

[Make A Donation](#)

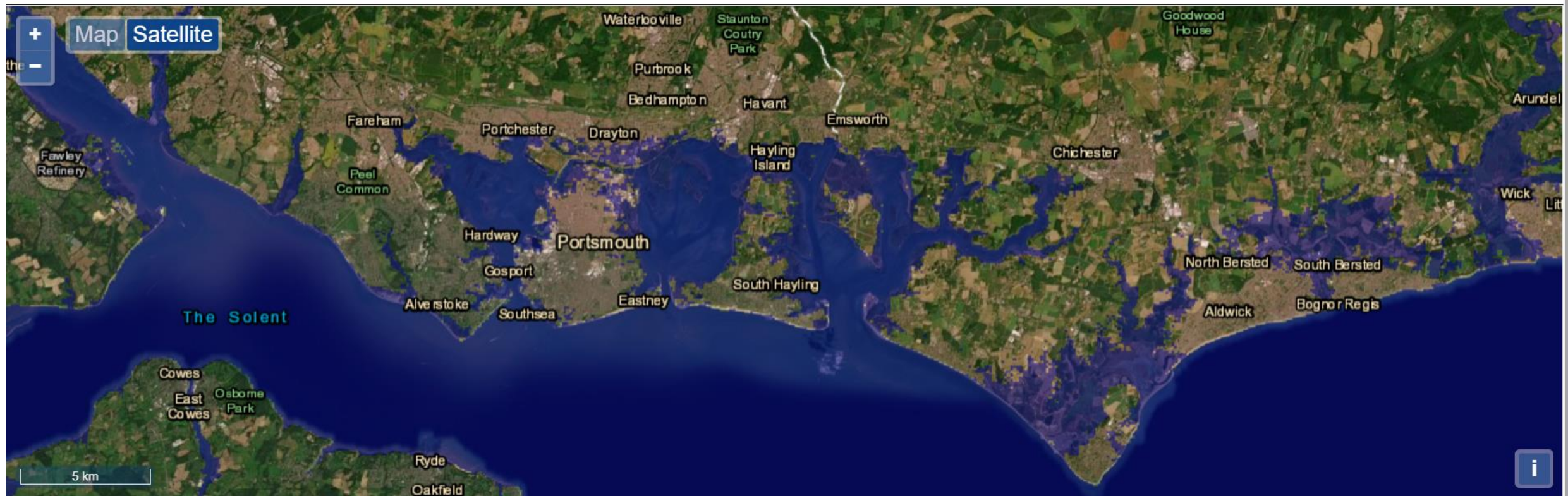
[my flood map](#) | [about](#) | [privacy](#)
Data provided by [NASA](#)

<http://flood.firetree.net/>

Sea level rise:



[Europe](#) [N. America](#) [S. America](#) [Africa](#) [SE. Asia](#) [China & Japan](#) [Australia](#)



Link to this page:

<http://flood.firetree.net/?ll=50.8044,-0.9609&zoom=11&m=2&type=hybrid>

[Make A Donation](#)

[my flood map](#) | [about](#) | [privacy](#)
Data provided by [NASA](#)

<http://flood.firetree.net/>



- New environmental charity, registered CIO Dec 2020, public launch 6 June 2021 in Town Square
- 10 trustees and 7 committee members, including local councillors from all main parties, 200+ supporters
- Mission:
 - to help Petersfield and surrounding villages reduce their carbon emissions and protect nature,
 - to work with local people and organisations to create the changes to our buildings, transport, natural environment, understanding and behaviour that our community needs to live sustainably.

Sign up for newsletters at:
www.petersfieldcan.org

Facebook page:
www.facebook.com/PetersfieldClimateActionNetwork



Figure 1 - Carbon budget and target temperature limits

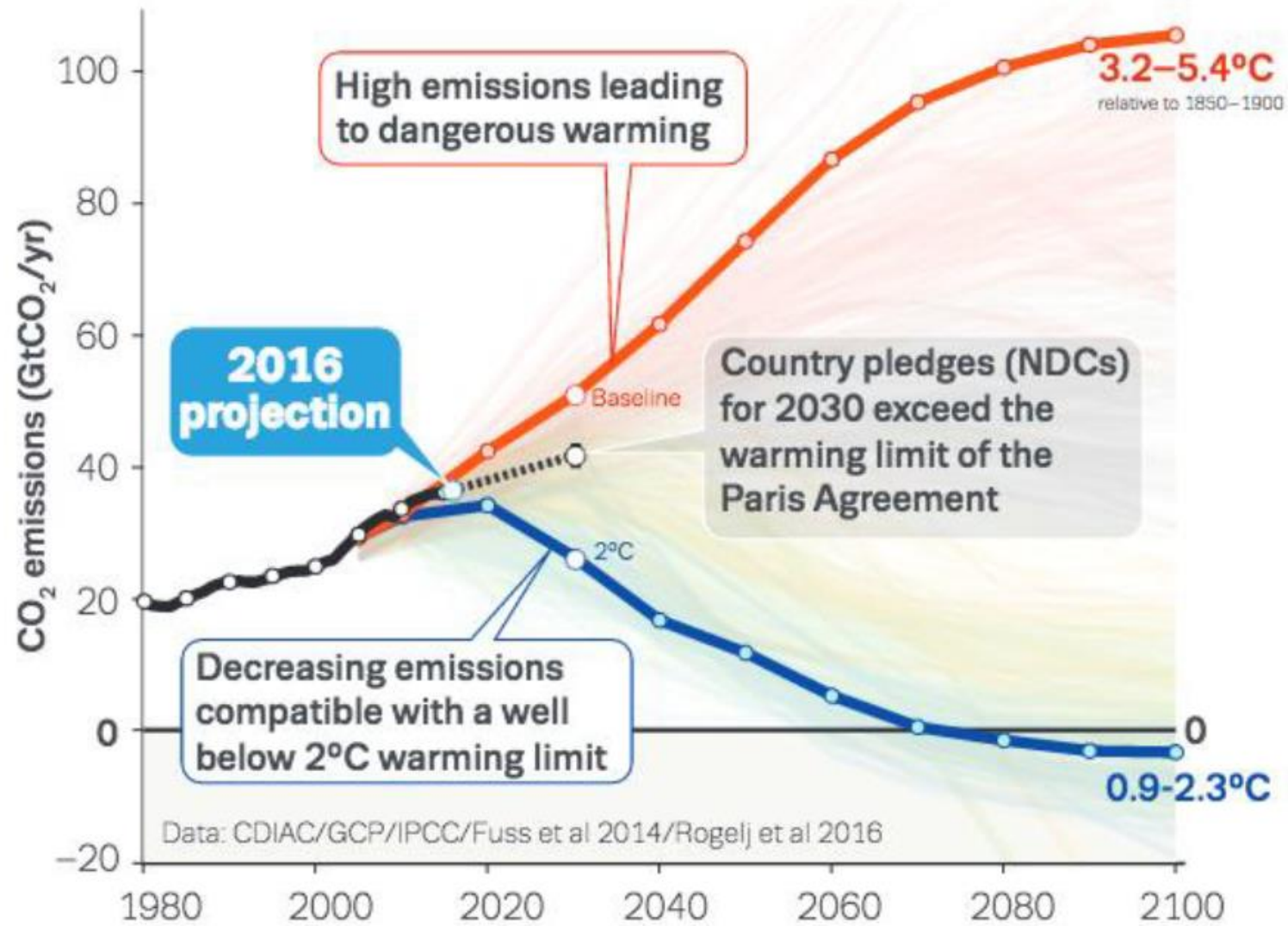
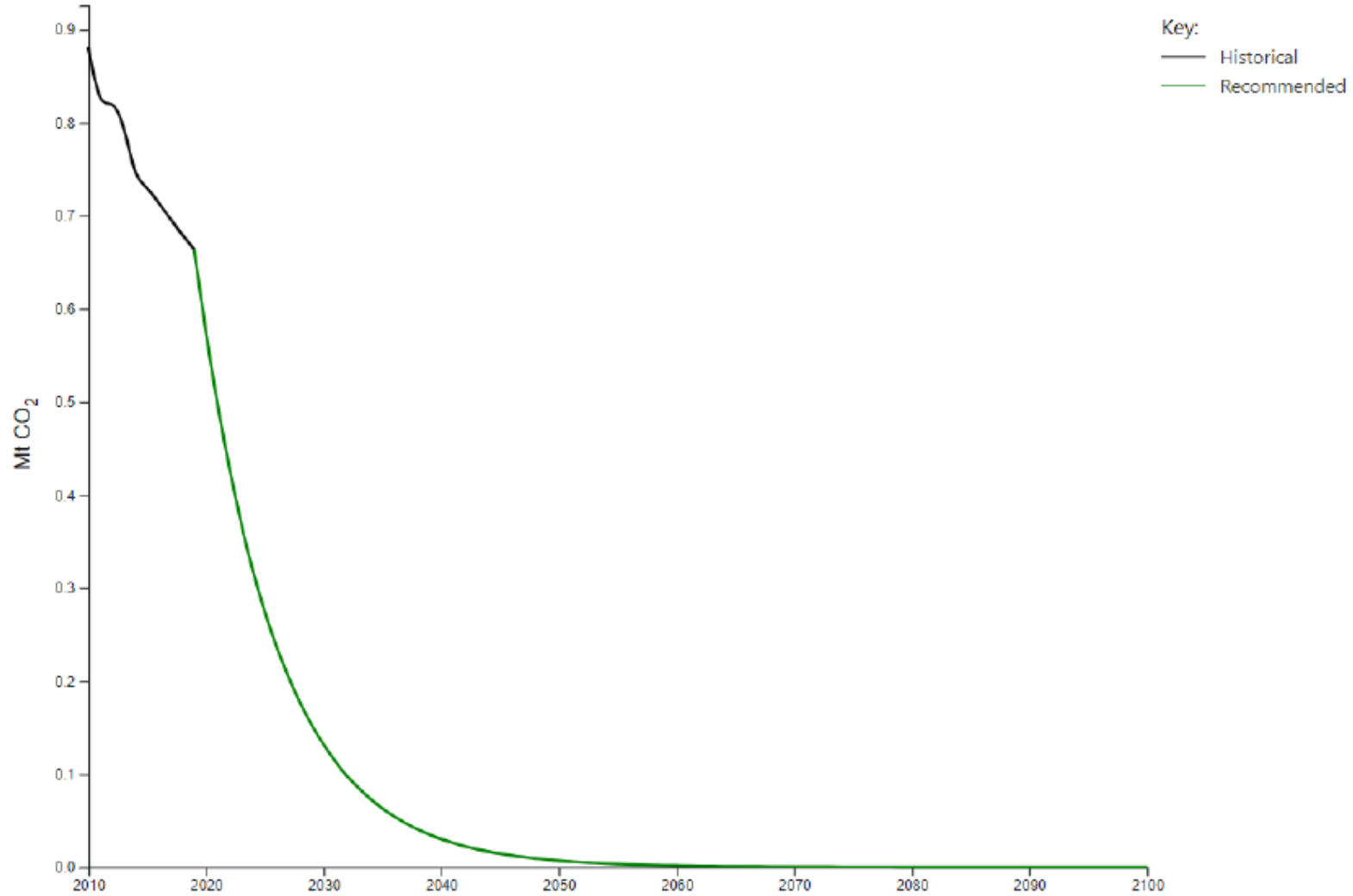




Figure 3 – Tyndall Centre recommended emissions reduction pathway

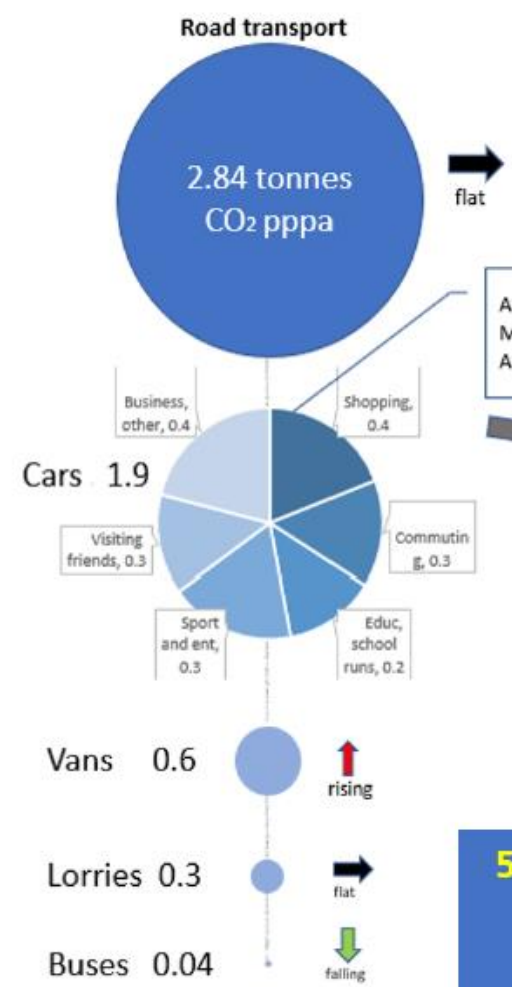
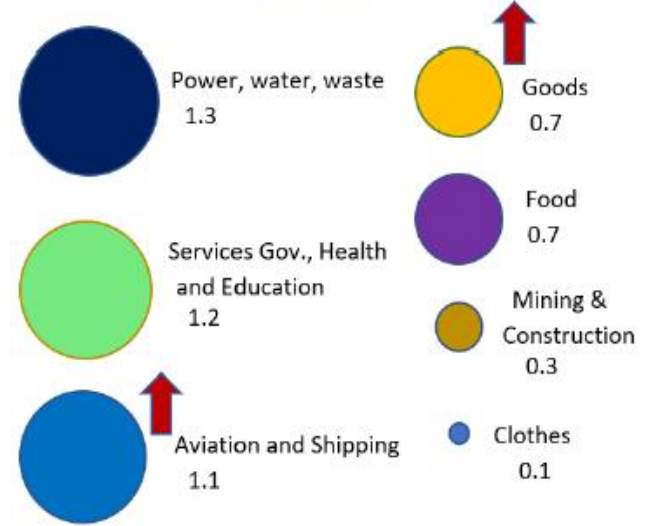
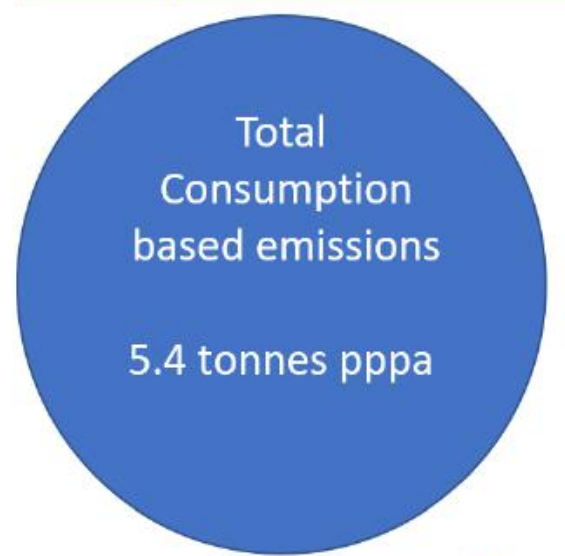
Pathway projections for East Hampshire



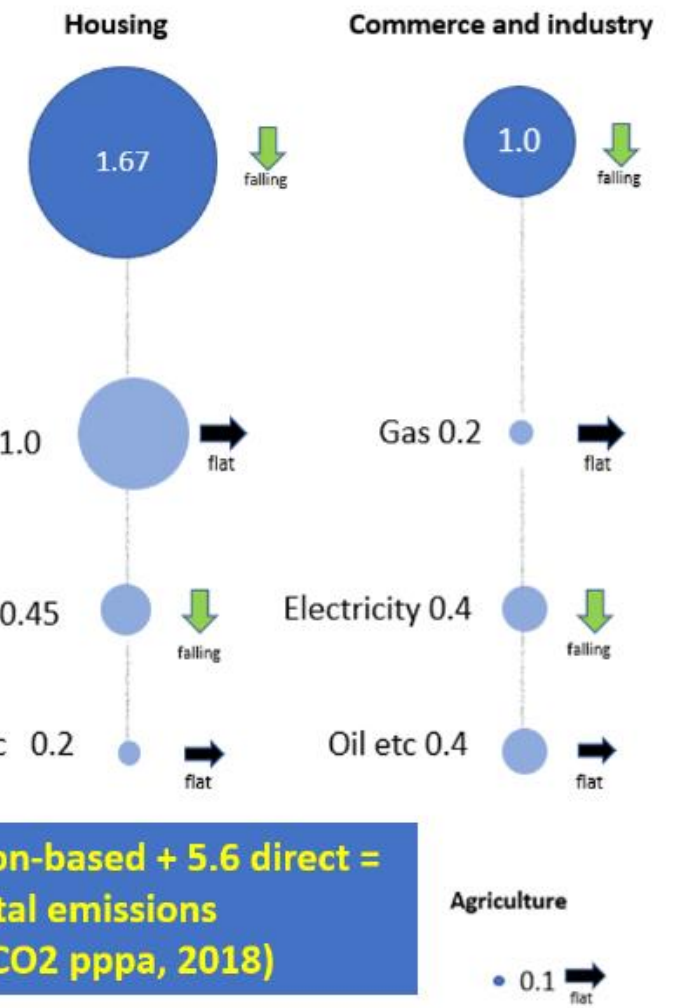


Average annual consumption-based and direct emissions per person in East Hampshire (2018)

Consumption-based emissions + **Direct emissions** = **Total per capita East Hants emissions 2018**

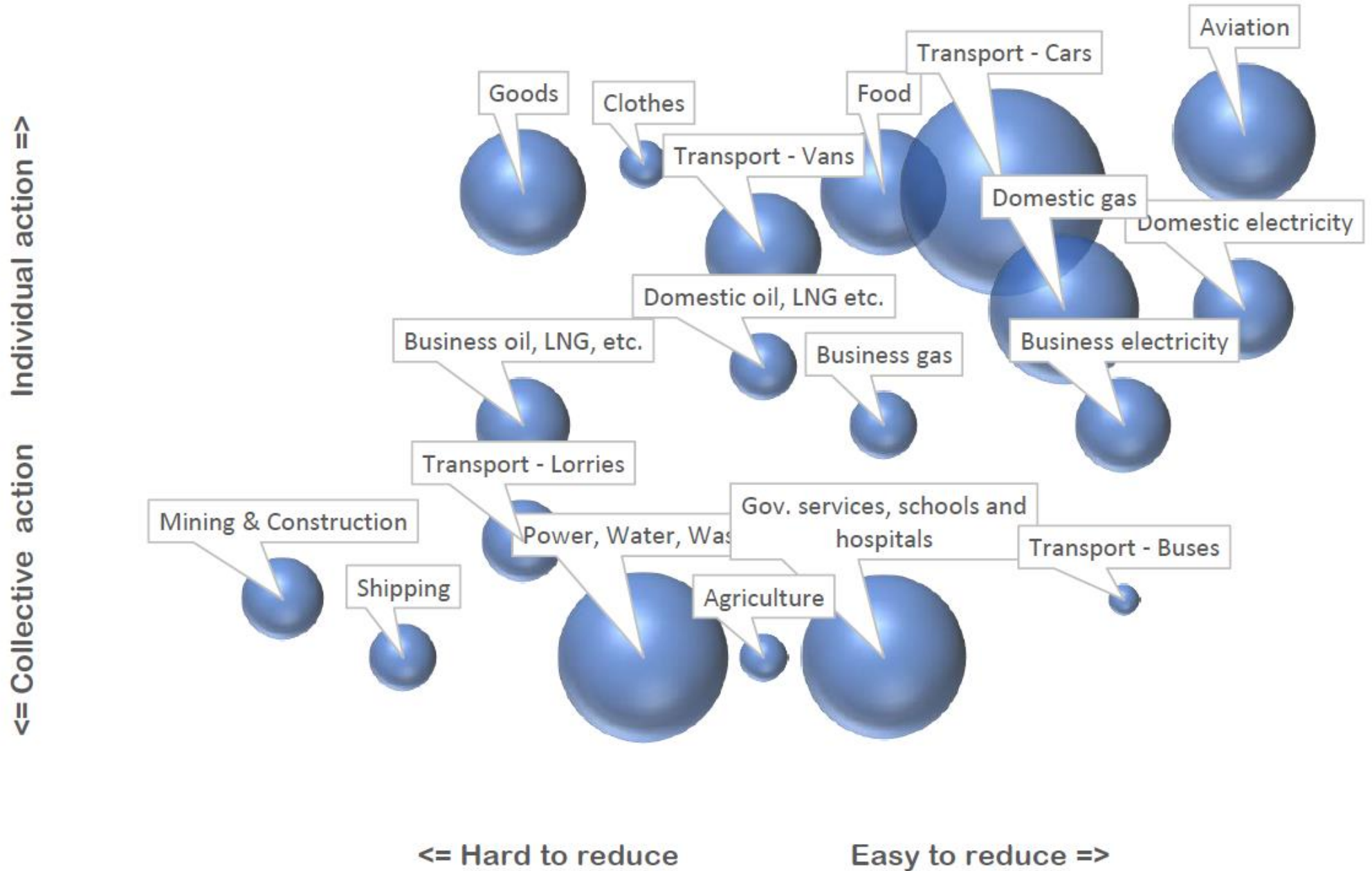


5.4 consumption-based + 5.6 direct = 11 total emissions (tonnes CO₂ pppa, 2018)





Where can local action have the most impact?





PeCAN projects so far:

- SuperHomes
- A fruit tree in every garden
- Wildflower verges in town
- Planning rules
- Local council activities
- Schools - low carbon heating and solar PV
- New developments - microgrids
- Join us!

Sign up for newsletters at:

www.petersfieldcan.org

What other nearby parishes are doing

East Meon – nature group

Liss – parish council investigating setting up as a PeCAN branch

Clanfield and Chalton – Community Working Group

Sheet – interested residents

Other East Hants parishes have begun talking about climate change:

Four Marks, Binstead, East Tisted, Beech Parish...

Clanfield and Chalton Parish Council

Village Green Audit

Parish Council Green Charter

Greening campaign

Tree planting and wildflower meadows

Public awareness

EV charging points



What could Buriton Parish Council do?

A few ideas:

Declare a Climate Emergency

Adopt a climate charter for decision making

Create a climate change group

Baseline assessment <https://impact-tool.org.uk/>

Speakers and fairs, retrofit trail, thermal imaging

Tree planting and tree warden

Wildflower verges and meadows

Planning and new developments

Village assets: Village Hall, the Rec, Buriton Primary School, Pubs



What could Buriton Parish Council do?

What next?